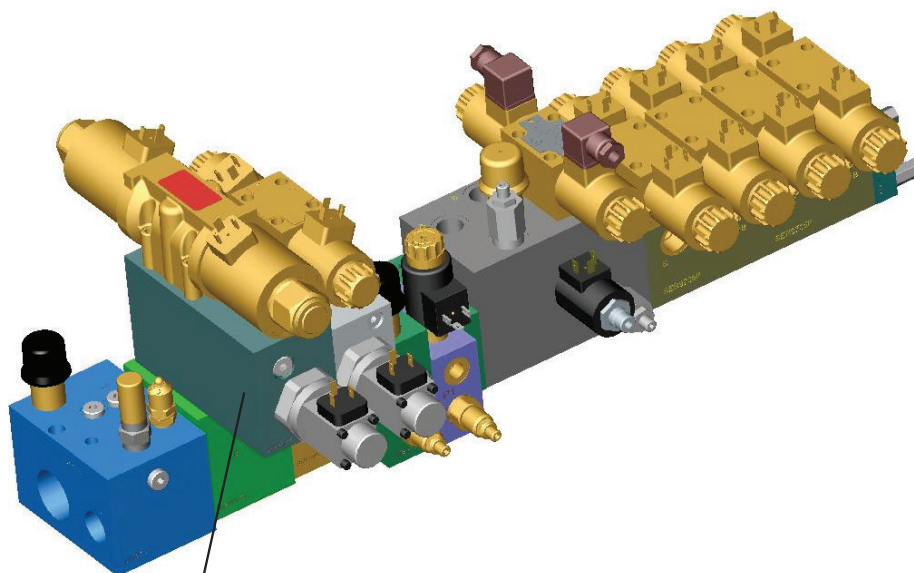
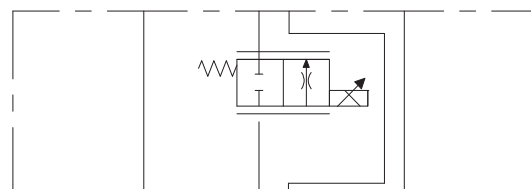
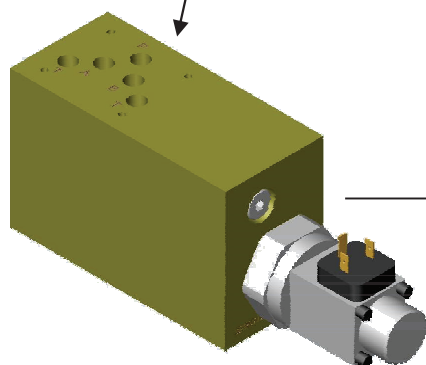


## Segment Zwischenplatte SER9712Z



**Steuerblock in Sandwich-Bauweise**

**Schaltplan:**



**Technische Daten:**

**2 Wege Prop.- Stromregelventil**  
**Regelbereich 0 – 70 l/min.**  
**Druck 250 bar**  
**Spannung 12 oder 24 VDC**  
**E-Verstärkerplatine**  
**ESC-2000-U**